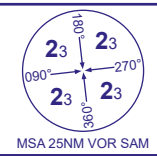
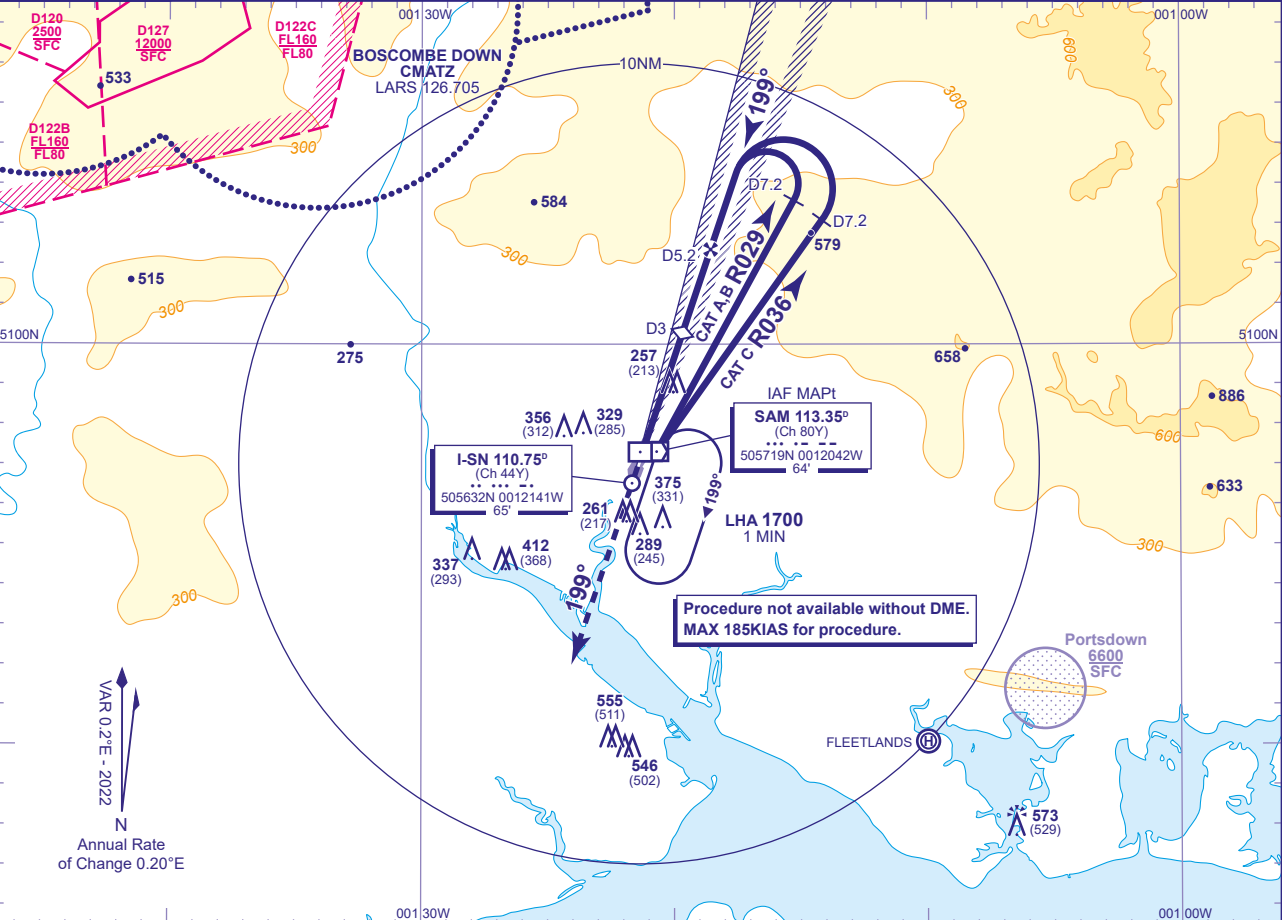


INSTRUMENT APPROACH CHART - ICAO

SOUTHAMPTON
(IAF VOR SAM)
LOC/DME
RWY 20
(ACFT CAT A,B,C)

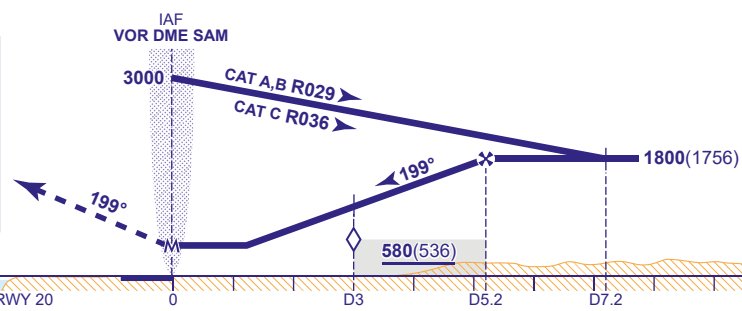


APP	120.230	SOLENT RADAR	AD ELEVATION	44
	122.730	SOUTHAMPTON RADAR	THR ELEVATION	44
TWR	118.205	SOUTHAMPTON TOWER	OBSTACLE ELEVATION	648 AMSL (604) (ABOVE THR)
ATIS	130.880	SOUTHAMPTON INFORMATION	BEARINGS ARE MAGNETIC	
				TRANSITION ALTITUDE 6000 (see note 6)



RECOMMENDED PROFILE Gradient 5.4%, 330FT/NM				
DME I-SN	5	4	3 (SDF)	2
ALT(HGT)	1740(1696)	1410(1366)	1080(1036)	750(706)

MAPt VOR SAM
Continuous climb to **3000**, initially straight ahead then as directed.
RCF: Continuous climb to **3000**. Initially straight ahead to **2000** or I-SN DME 7.7 (SAM DME 8) whichever is later then climbing right turn to **VOR SAM** to hold at **3000**.



Aircraft Category		A	B	C	Rate of descent	G/S KT	160	140	120	100	80
OCA (OCH)	Procedure	510(466)	510(466)	510(466)		FT/MIN	880	770	660	550	440
VM(C)OCA (OCH AAL)	Total Area	680(636)	700(656)	890(846)							

- NOTE**
- Lowest altitude to commence procedure from hold is **2000**.
 - DME SAM is situated 0.3NM east of THR RWY 20.
 - DME SAM may be substituted for DME I-SN if required. There are no changes to DME distances when DME SAM is used.
 - Due to controlled airspace constraints, aircraft may temporarily leave controlled airspace in the base turn. Aircraft being radar vectored to the LOC may not be provided a period of level flight immediately prior to crossing the FAF.
 - Aircraft will normally be required to hold not lower than **2000**.
 - Outside the Solent CTA notified hours of operation the Transition Altitude is **3000**.

CHANGE (12/25): BOSCOMBE FREQUENCY.